

Specifications

Specifications

Table Length-----	5200mm
Table Width-----	2100mm
Table Height-----	500mm
Diameter of the Post -----	160mm
Hydraulic Pressure -----	70MPa
Post Max. Tension -----	10T
Post Working Rang-----	360°
Height of the Post-----	2250mm
Pulling Stroke-----	358mm
Pneumatic Pressure -----	0.5-0.8MPa
Max Load-----	3500kg
Total Weight -----	2700kg

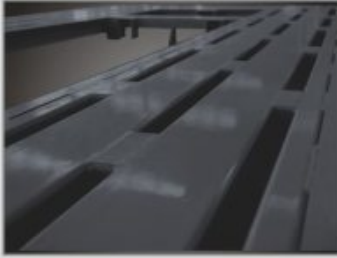
Performance Introduction

takes in the most advanced technology of the globe. We also take the actual problems existing during domestic auto repairing works into sensible consideration. This equipment is aiming at Practicability, safety and accuracy. The adaptation of modular design concept as well as professional division of labor, with our great passion and exquisite workmanship, creates distinguished quality and technology.

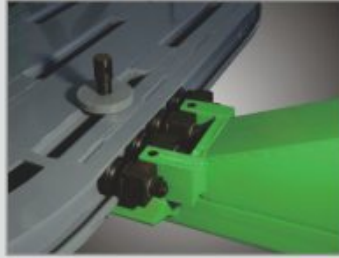
1. The platform is made from rectangular pipe by welding. High density manganese steel makes it durable.
2. Double posts, 160mm of diameter, 2250mm of height can meet the pulling repair of a variety of high-tensile auto bodies.
3. 358mm of pulling stroke greatly improves the working efficiency.
4. Main clamps with measuring system can help us to locate car precisely.
5. Rich high-tensile pulling clamps and accessories can meet the pulling repair of autos in different shapes.
6. Double hydraulic systems guarantee strong power and durability.
7. High-precision measuring system can provide accurate and convenient operation.
8. Universal data of all kinds of vehicles can meet all the repairing needs..

Standard accessories





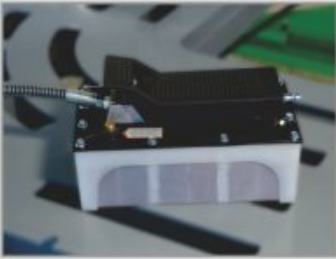
网格化的工作平台，为钣金技师提供无限操作可能，极大提高工作效率。
net style platform provides unlimited possibility for collision repairers and improves efficiency to great extent.



优化的拉塔运行机构，保证拉塔运行平稳、安全、不脱落。
optimizes pull tower runs organization, ensures that operation does not come off stable, safe. .



厚度达20mm的整体铸钢的高强度专利弹簧钩板。
patent high strength spring hook board with 20mm thickness whole cast steel.



气动液压泵
Hydraulic pump.



重力回转拉钩，自动微调拉伸力方向。
the gravity gyration arag hook, the automation readjust stretch force directionl.



迈杰测量仪。
MEASURE system
测量本质是精准并易于操作。
measure nature is to accurate and be handled easily accurate

No.	Name	Item No.	Picture	Quantity	No.	Name	Item No.	Picture	Quantity
	Auto Body Collision Repair Equipment	B05/B10			5	Wheel Bracket	WB		2
1	Platform	PF05 PF10		1	6	Trolley	TR		2
2	Tower with Upper Puller	TW01		1	7	Ramp	RM01		2
3	Tower	TW02		1	8	Hydraulic Pump with oil tube, joint	DHPA-6		2
4	Main Clamp	MC05		4	9	Measuring System	M-3		1
					10	Pulling Tools	DC-16		1

